

Stak Jaks



The Stak Jak is a revolutionary flat-profile lifting cushion for vehicle and heavy duty lifting requirements. The flat profile of the Stak Jak has several distinct advantages over traditional ovoid lifting cushions of which the most significant is the ability to safely stack up to three cushions together. This enables a greater lift height without the risk of sudden ejection or instability that is possible when stacking ovoid mats.

- The flat profile allows three cushions to safely stack on top of one another
- Provide a strong and steady lift to stabilize a vehicle and improve access to casualties
- They are not subject to the diminishing lift capacity that is experienced with ovoid mats
- Lifting capacity remains constant throughout the lift, even at full height
- Slimline for tight space scenarios and compact storage
- Constructed from exceptionally tough kevlar cord, but are light enough to be carried by one person
- Can be inflated quickly to provide an instant lift
- Have a controlled deflation facility if required
- Large lift capacity and height
- Controlled deflation capability

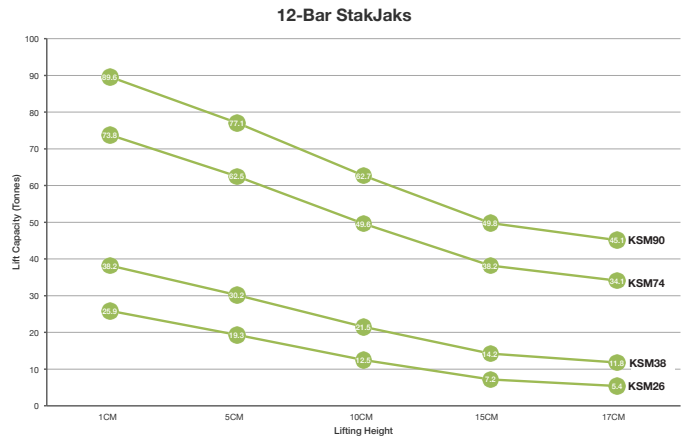
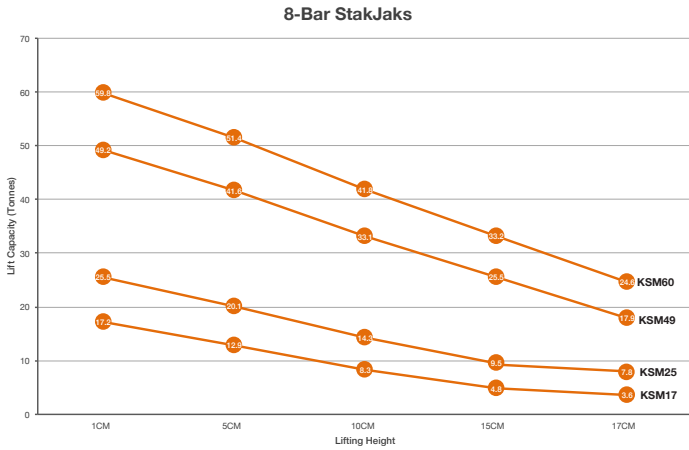
Used For:

- Road Traffic Incidents
- Light Aircraft crash
- Rapid Response Rescue
- Raising Submerged Vehicles and small craft

Technical Data	KSM17 (8 BAR)	KSM26 (12 BAR)	KSM25 (8 BAR)	KSM38 (12 BAR)	KSM49 (8 BAR)	KSM74 (12 BAR)	KSM60 (8 BAR)	KSM90 (12 BAR)
Product Code	KSM17/08	KSM26/12	KSM25/08	KSM38/12	KSM49/08	KSM74/12	KSM60/08	KSM90/12
Length (cm)	52	52	62	62	84	84	92	92
Width (cm)	52	52	62	62	84	84	92	92
Inflated Height (cm)	17.5	17.5	17.5	17.5	17.5	17.5	17.5	17.5
Deflated Height (cm)	2.5	2.5	2.5	2.5	2.5	2.5	2.5	2.5
Packed Size (cm)	55x55x4	55x55x4	65x65x4	65x65x4	88x88x4	88x88x4	95x95x4	95x95x4
Max. Lift Capacity at Min. Lifting Height (tonne)	17.2	25.9	25.5	38.2	49.2	73.8	59.8	89.6
Max. Lift Capacity at Max. Lifting Height (tonne)	3.6	5.4	7.8	11.8	17.9	34.1	24.6	45.1
Max Flat Area (cm)	24x24	24x24	34x34	34x34	56x56	56x56	64x64	64x64
Air Requirements (ltr)	305	479	465	731	893	1403	1074	1687
Weight (kg)	8	8	12	12	20	20	23	23
Max. Pressure (bar)	8	12	8	12	8	12	8	12



LIFTING HEIGHTS



STANDARD EQUIPMENT

Retaining Straps Series 25 male with female thread
(SP0068) (010028)



OPTIONAL EQUIPMENT



8 Bar Steel Controller
(CO0026-10-07)



8 Bar Aluminium Single Control Unit
(CO0052-10-07)



8 Bar Aluminium Double Control Unit
(CO0055-10-07)



8 Bar Aluminium Triple-control Unit
(CO0058-10-07)



8 Bar Plastic Controller
(CO0034-10-07)



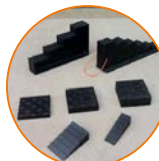
Hand Held 8 Bar Controller
(CO0073-10-07)



8 Bar Regulator
(RE0034)



Scuba 300 Bar Regulator
(RE0036)



Safety Chocks
(Part number depending on block)



Yellow Inlet Hose
(2m: HS-01-04-02-06-06
5m: HS-01-04-05-06-06
10m: HS-01-04-10-06-06)



Red Outlet Hose c/w S25 Couplings
(5m: HS-01-01-05-06-07
10m: HS-01-01-10-06-07)



Green Outlet Hose c/w S25 Couplings
(5m: HS-01-02-05-06-07
10m: HS-01-02-10-06-07)



Blue Outlet Hose c/w S25 Couplings
(5m: HS-01-03-05-06-07
10m: HS-01-03-10-06-07)



Yellow Outlet Hose c/w S25 Couplings
(5m: HS-01-04-05-06-07
10m: HS-01-04-10-06-07)

MFC International

Naval Yard
Tonypandy
Rhondda Cynon Taff
CF40 1JS

☎: +44 (0) 1443 433 075

✉: sales@mfc-international.com

🌐: www.mfc-international.com