



The StakJak high-pressure lifting bag is a revolutionary flat-profile lifting bag for vehicle and heavy duty lifting requirements. The flat profile of the StakJak has several distinct advantages over traditional ovoid lifting bags of which the most significant is the ability to safely stack up to three bags together. This enables a greater lift height without the risk of sudden ejection or instability that is possible when stacking ovoid bags.

In addition the StakJak high-pressure lifting bags are not subject to the diminishing lift capacity experienced with ovoid mats. Complicated graphs and uncertain lifting heights and capacities do not need to be considered when using a StakJak; their lifting capacity remains constant throughout the lift, even at full height.

StakJak lifting bags slim profile allow for use in tight spaces and reduce storage requirements. High pressure lifting bags (also sometimes called lifting mats) are constructed from exceptionally tough Kevlar cord, yet are light enough to be carried by just one person.

StakJak lifting bags can be inflated quickly to provide an instant lift, making them ideal for use in rapid response emergency situations. High pressure lifting bags of this type also have a controlled deflation facility if required, and can be supplied with an optional bleed valve on request

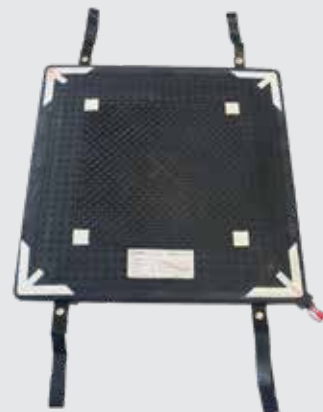
- Flat profile avoids diminishing lift
- Stack up three bags safely
- Supplied with Karabiner style retaining straps
- Lightweight and compact
- Controlled deflation facility
- Significantly more stable than an ovoid lifting bag
- Versatile - designed for emergency services but also used in industry, mining, railroads, armed forces, and caravan and static unit companies

Used for:

- Road traffic incidents
- Light aircraft crash
- Rapid response rescue
- Raising submerged vehicles and small craft

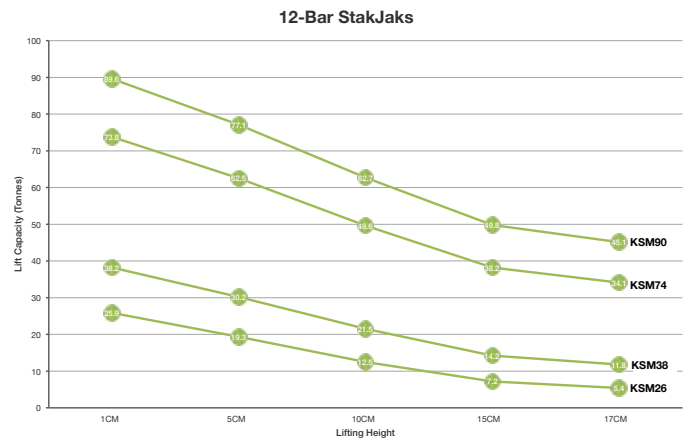
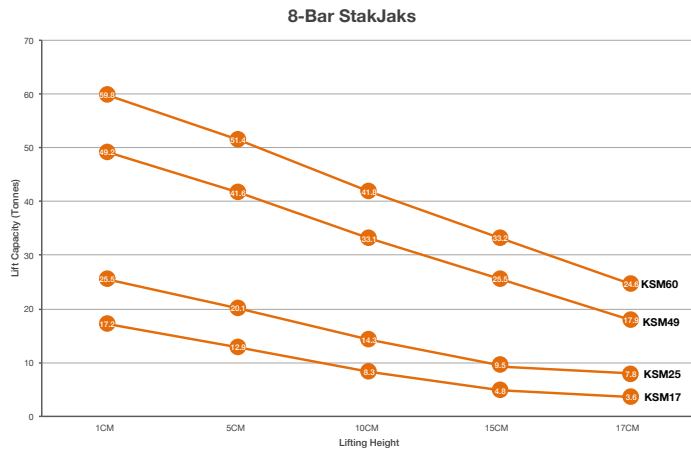
Complies with:

- EN 13731:2007 (independently tested)



Technical Data	KSM17 (8 BAR)	KSM26 (12 BAR)	KSM25 (8 BAR)	KSM38 (12 BAR)	KSM49 (8 BAR)	KSM74 (12 BAR)	KSM60 (8 BAR)	KSM90 (12 BAR)
Product Code	KSM17/08	KSM26/12	KSM25/08	KSM38/12	KSM49/08	KSM74/12	KSM60/08	KSM90/12
Length (cm)	52	52	62	62	84	84	92	92
Width (cm)	52	52	62	62	84	84	92	92
Inflated Height (cm)	17.5	17.5	17.5	17.5	17.5	17.5	17.5	17.5
Deflated Height (cm)	2.5	2.5	2.5	2.5	2.5	2.5	2.5	2.5
Packed Size (cm)	55x55x4	55x55x4	65x65x4	65x65x4	88x88x4	88x88x4	95x95x4	95x95x4
Max. Lift Capacity at Min. Lifting Height (tonne)	17.2	25.9	25.5	38.2	49.2	73.8	59.8	89.6
Max. Lift Capacity at Max. Lifting Height (tonne)	3.6	5.4	7.8	11.8	17.9	34.1	24.6	45.1
Max Flat Area (cm)	24x24	24x24	34x34	34x34	56x56	56x56	64x64	64x64
Air Requirements (ltr)	305	479	465	731	893	1403	1074	1687
Weight (kg)	8	8	12	12	20	20	23	23
Max. Pressure (bar)	8	12	8	12	8	12	8	12

LIFTING HEIGHTS



STANDARD EQUIPMENT

Retaining Straps Series 25 male with female thread
(SP0068) (010028)



OPTIONAL EQUIPMENT



8 Bar Steel Controller
(CO0026-10-07)



8 Bar Aluminium Single Control Unit
(CO0052-10-07)



8 Bar Aluminium Double Control Unit
(CO0055-10-07)



8 Bar Aluminium Triple-control Unit
(CO0058-10-07)



8 Bar Plastic Controller
(CO0034-10-07)



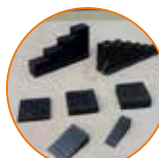
Hand Held 8 Bar Controller
(CO0073-10-07)



8 Bar Regulator
(RE0034)



Scuba 300 Bar Regulator
(RE0036)



Safety Chocks
(Part number depending on block)



Yellow Inlet Hose
(2m: HS-01-04-02-06-06
5m: HS-01-04-05-06-06
10m: HS-01-04-10-06-06)



Red Outlet Hose c/w S25 Couplings
(5m: HS-01-01-05-06-07
10m: HS-01-01-10-06-07)



Green Outlet Hose c/w S25 Couplings
(5m: HS-01-02-05-06-07
10m: HS-01-02-10-06-07)



Blue Outlet Hose c/w S25 Couplings
(5m: HS-01-03-05-06-07
10m: HS-01-03-10-06-07)



Yellow Outlet Hose c/w S25 Couplings
(5m: HS-01-04-05-06-07
10m: HS-01-04-10-06-07)

MFC International

Naval Yard
Tonypandy
Rhondda Cynon Taff
CF40 1JS

☎: +44 (0) 1443 433 075

✉: sales@mfc-international.com

🌐: www.mfc-international.com